

foundations, group 2 & 3

72^H_REXPRESS

allseating 

group 2

galaxy



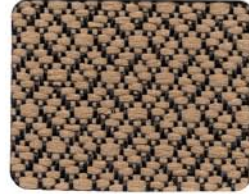
Charcoal



Ink



Pewter



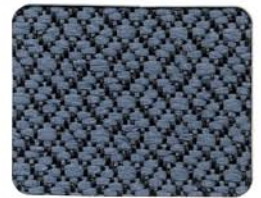
Carmel



Sage



Cabernet



Wedgewood

quasar



Eclipse



Mercury



Rosewood



Bamboo



Cypress



Vintage



Baltic

group 3

play 



Slate



Flint



Wicker



Monet



Waterlily



Flame



Oak

stucco 



Zinc



Carbon



Bark



Ocean



Wintermoss



Sangria



Earth

Technical Information

Group	Pattern	Width	Fibre Content	Weight / Finish	Abrasion Resistance	Light Fastness	Cleaning Code	Fire Retardency
2	Galaxy	54"	100% Olefin Latex	10 oz / Linear Yd.	Exceeds 75,000 Double Rubs	L5 Min. 40 hrs	W-S	Cal.117
2	Quasar	54"	100% Olefin Latex	10 oz / Linear Yd.	Exceeds 42,000 Double Rubs	L5 Min. 40 hrs	W-S	Cal.117
3	Play	54"	60% Recycled Polyester 40% Rayon Teflon	12 oz / Linear Yd.	100,000 + Double Rubs	4-5 Min. 40 hrs	W-S	Cal.117
3	Stucco	54"	90% Recycled Polyester 10% Cotton Teflon	12 oz / Linear Yd.	180,000 + Double Rubs	4-5 Min. 40 hrs	W-S	Cal.117

Dyelots may vary slightly from samples shown.

Cleaning Code Definitions

W-S: Clean with water-based cleaning agents, foam or pure water-free solvents. (Energine, Carbonna, Renuzit or other similar products.)
Vacuuming or light brushing is recommended to prevent dust and soil build-up.

Colour Fastness: Colour fastness to light is the degree to which the fabric will retain its colour when exposed to light. Class 4 minimum at 60 hours is recommended for direct sunlight exposure situations.

Note: Colour Fastness results may vary from colour to colour.

 Environmentally friendly fabric with a minimal environmental footprint.



For entire fabric collection, go to SpecAll at www.allseating.com.

allseating 

5800 Avebury Rd, Unit 3 Mississauga, ON Canada L5R 3M3
Tel 1 800 563 3502 Fax 1 800 272 9911 www.allseating.com

2009-09