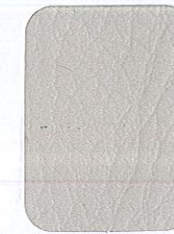




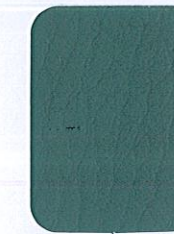
WHISPER - Patina



Brilliant White



Bone



Patina



Cerulean



Navy



Camel



Cappuccino



Bordeaux



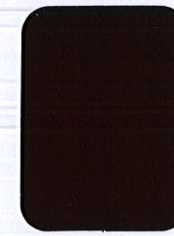
Cinnamon



Luggage



Salsa



Merlot



Khaki



Cavern Moss



Loden



Anthracite



Green Tea



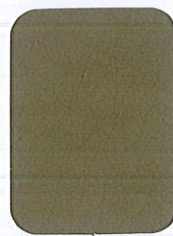
Antelope



Forest



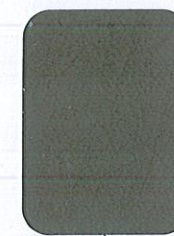
Sisal



Gravel



Nightshade



Elephant



Charcoal



Black

## technical information

Group	Pattern	Width	Fibre Content	Protective Finish	Weight	Abrasion Resistance	Light Fastness	Adhesion	Fire Retardancy
3	Whisper	54"	100% Polyvinyl Chloride Polyurethane topcoat	Anti-microbial Anti-bacterial Mildew resistant	27.00 oz./ Linear Yard	100,000+ Double Rubs	UV resistant 1000 hours	ASTM D751-89 Warp: 7lbs., Fill: 6lbs.	Cal. 117-Sec. E IMO A.652 (16) 8.2 & 8.3 MVSS 302 NFPA 260 UFAC Class 1 Passes

### Whisper Cleaning Instructions

Step 1: For light soiling, a solution of 10% household liquid dish soap in warm water, applied with a soft damp cloth. Rinse with clean water and dry.

Step 2: For heavy soiling, dampen a soft white cloth with a one to one (1:1) solution of Formula 409<sup>®</sup> and water or Fantastik<sup>®</sup> and water. Rub gently and rinse with a water dampened cloth.

Step 3: For more difficult stains, dampen a soft white cloth with a solution of household bleach (10% bleach and 90% water). Rub gently and rinse with a water dampened cloth to remove bleach concentration.  
Do not use with alcohol based cleaning agents!

to view our entire fabric collection,  
please visit [www.allseating.com](http://www.allseating.com)

need it now? this fabric is part  
of our 72HR express program.